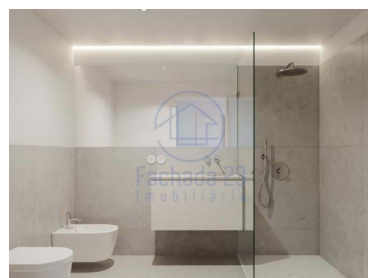
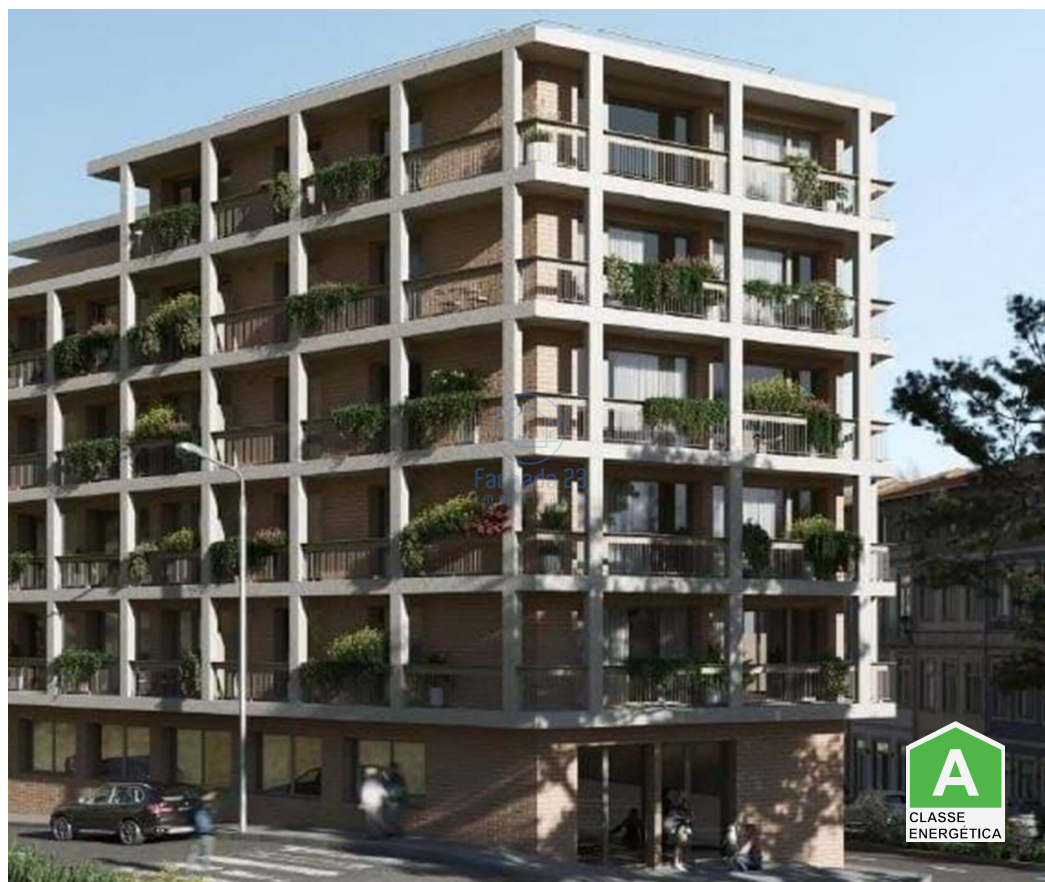




Bonfim - Apartment



2 Bedrooms
 2 Bathrooms
 99 Area (m²)
 1 Garage

380 000 €
(EUR €)

T2 with 3m2 balcony facing South/North and parking space.

T2 with 14m2 balcony facing west and parking space.

FERREIRA DE CASTRO FLATS located in Bonfim is the trendy neighborhood of Porto, in the surroundings of Baixa: an excellent residential area undergoing profound transformation with local shops and restaurants, highly sought after by young people and foreigners, due to its location, transport network and influence art at the School of Fine Arts and Escola Soares dos Reis.

The project, designed by Architect Adriana Floret, includes 38 dwellings (T0, T1, T2 and T3), spread over 6 floors. The apartments, with large balconies, combine design, comfort and functionality, aimed at a public that prefers living in the surroundings of downtown Porto. The building has parking spaces and storage rooms, spread across two basements.



The Ferreira de Castro Flats residential condominium is located on the corner of Ruas do Bonfim and Pinto Bessa, right in front of the Bonfim Church. A 10-minute walk away is the Campo 24 de Agosto metro station and the new Campanhã Intermodal Terminal (metro, train and express network). Numerous buses run along Rua do Bonfim and end their journey at the Bolhão market.

Property Features

- Garage
- Video entry system
- Double glazing
- Quiet Location
- Parking space
- Uninterrupted views
- Mains water
- Views: City view
- Lift
- Main drainage
- Central location
- Security door
- Energetic certification: A