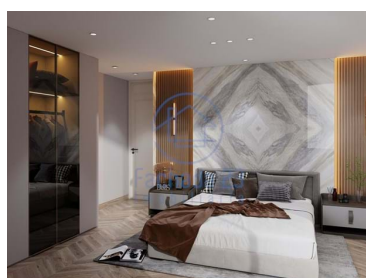




Campanhã - Apartment



 **3** Bedrooms
  **3** Bathrooms
  **131,4** Area (m²)
  **Garage**

591 300 €
(EUR €)

New 3 bedroom apartment with parking space next to the Dragão stadium with excellent access to highways and services.

Making a real estate investment in Antas to rent or sell with great profitability? Living in what is considered one of the best European cities to live and work in? So, meet the Nobel project! A safe, predictable and flexible investment.

The Nobel project is located in the Antas region, next to Estádio do Dragão, the subway, VCI and, in the future, a large business center (Matadouro de Campanhã complex). The Antas neighborhood is considered one of the city's noble areas and offers a great quality of life, which is why it is highly sought after for real estate investment in Porto.



At Empreendimento Nobel, you can enjoy luxurious and spacious studios and apartments, located in a modern and sustainable development with minimalist design. Its interiors are aligned with the latest aesthetic and architectural trends, featuring sophisticated, resistant and natural materials, in a modern, refined and timeless decoration. The properties have spacious rooms to provide peace and quiet in a prime area of the city!

Conditions of sale: CPCV 25% Deed 75%

Property Features

- Garage
- Lift
- Electric garage gate
- Central location
- Energetic certification: A
- Views: City view
- Double glazing
- Main drainage
- Security door
- Mains water